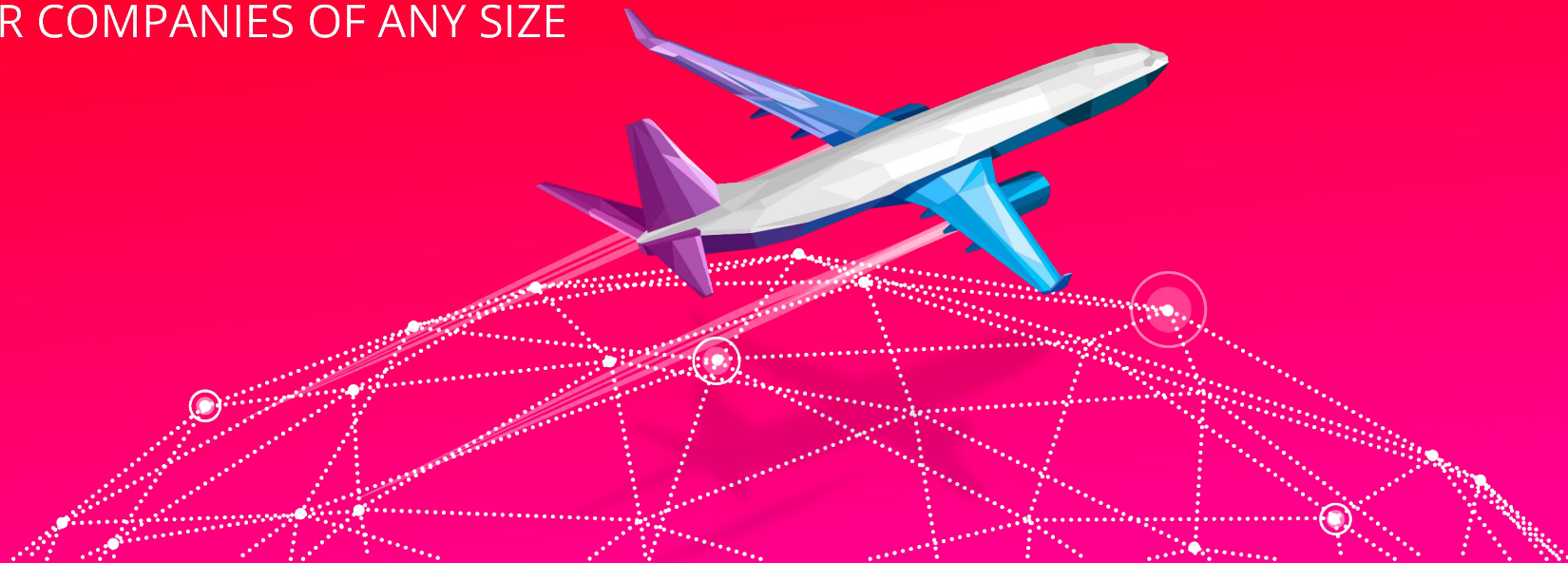




ULTIMATE AVIATION BUSINESS MANAGEMENT SOFTWARE

FOR COMPANIES OF ANY SIZE





COMMERCIAL AIRLINES

Commercial Airlines executives manage a large amount of complex data on a daily basis in order to properly employ and control their resources as well as serve their customers efficiently.

Awery ERP provides all the required tools, reminders, templates and reports in one place integrating business and financial operations, covering the entire workflow and supplying a multifunctional platform for day-to-day business activities.



HOW WE HELP BUSINESSES

AWERY



Improve business processes and visibility



Reduce human intervention and prevent multiple errors



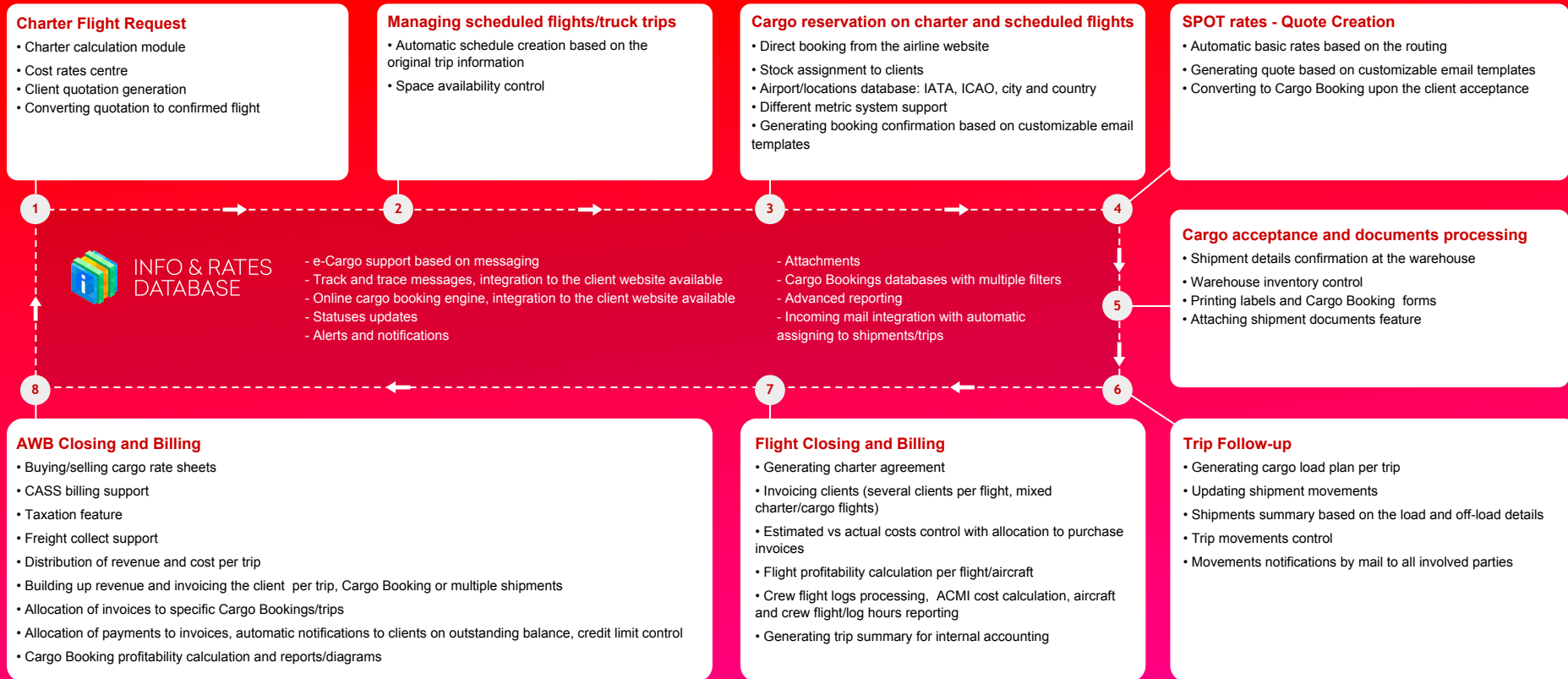
Save time and efforts



Assist in decision making



Boost profitability





INFO & RATES DATABASE

	CUSTOMERS: Contacts, Documents	
	SUPPLIERS: Contacts, Documents, Capabilities by priorities	
	AIRCRAFT: Documents, Images,	
	CREW DETAILS: Documents, Trainings, Customers operating the crew, FDTL rules	
	Cargo Booking Stocks	
	Schedules	
	Service types settings	
	Aircraft types	
	Countries, countries requirements & alerts	
	Airports, airports alerts, weather & NOTAMs	
	RATES: Cargo buying/selling rates, Cost rates for flights services, Fuel: contract vs spot prices, Currency	
	Companies/Branches/Teams	
	Employees	
	Users	
	Picklists setup	
	Chart of accounts	



Awery Aviation ERP is a complete integrated web-based extremely flexible and customizable platform that manages main aviation business processes: sales, operations, finance and HR, increasing productivity, reliability, and efficiency.

KEY FEATURES

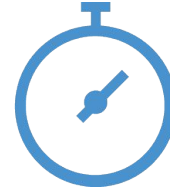
AWERY



Flexible connectivity to other systems for data exchange



Transparent information flow within the company



Blazingly fast performance



User-friendly interface



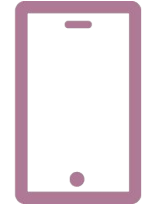
Bank-grade security with advanced access policies



Support of Multi-Company (Branches) configuration



Customer service tools



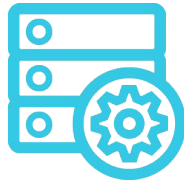
Mobile apps



An integrated real-time view of core business processes accessible from any place in the world



Powerful CRM, informational database, source for tactical and strategic planning



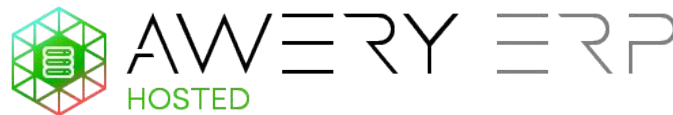
Up-to-date management reports and data for analysis, automated documentation



Integrated mailing/messaging system with templates support



-
- Hosted, supported, and managed by Awery 24 hours, 7 days a week.
 - Monthly license fees per user.
 - No hardware related and IT support costs.
 - Perfect solution for small and midsize aviation businesses.



-
- System is hosted on customer server – in data center or in customer's local IT infrastructure.
 - Goes with Database License and 24/7/365 Awery support.
 - Best fits big aviation players with sophisticated IT infrastructure.



FLIGHT OPERATIONS

- Flights database with advanced filters and reports.
- Charter and scheduled flights planning, creation and follow-ups.
- Interactive map and Gantt view.
- Routing services control with request templates support.
- Flight briefings, cargo manifests and general declarations, automatic weather and notams update reports.
- Advanced flight logs processing.
- Revenue and costs control with direct link to accounting.



FLEET MANAGEMENT

- Aircraft and aircraft types database with full technical details.
- Fleet specifications, photo galleries.
- Documents control with notifications.
- Maintenance schedule, MEL resources tracking.
- ACMI rates and charges database for different locations.
- Advanced customizable reporting based on flight logs.



CREW CONTROL

- Crew rostering, scheduling and assignment to duties and flights.
- Flight Duty Time and Flight Time Limitations (FDTL) Control.
- Crew salary, bonuses, additional payments and expenses.
- Documents, trainings and vacations management.
- Advanced reporting.



CREW PORTAL

- Personal crew member login.
- Checking, confirming or refusing upcoming flights.
- Checking flight details and documentation (brief, flight plan, crew general declaration, manifest, weather and notams).
- Standby and days off schedule.
- Vacations requests and their status updates.
- Alerts on expiring documents and trainings.
- Checking compliance with flights and duty limitations.
- Submitting comments and attachments.
- Inputting and attaching flight log data.
- iOS and Android mobile apps support.



AVIATION SERVICES MANAGEMENT

- Automated flight services requests control.
- Services requests processing and management: fuelling, handling, permits, flight plans, etc.
- Preferred vendors management based on priority, service type, customer requests, flight category and country/location.
- Sale and cost rates database for services.
Revenue and costs calculation, accounting processing/allocation.
- Automated messages generation based on Text, HTML and SITA templates.
- Web and mobile service status tracking/request application for the customers.



CHARTER QUOTATION

- Automated process to speed up input of enquiries, send requests to operators, quote customers, make flight briefing, generate charter agreements, reports, summary reports, etc.
- Segregated database of enquiries filterable by: type of request (Commercial Jet, VIP, Cargo), unique reference, fixture number, status, dates of flight, routing, broker, etc.
- Advanced support databases: operators, fleet, aircraft types, airports, countries, etc.
- CRM features: customers/suppliers with contact details, requests, activities, tasks and messaging history.
- Automated message generation to send requests to operators.
- Response from operators: schedule details, charter price details, additional services price details.
- Response from customers: won, lost with reason, fixture details, fixture schedule, fixture reference number.
- Empty legs enquiries management, operator's empty legs connectivity through API.
- Interactive world map with combined data from enquiries database and empty legs with analytics.
- Charter calculation that allows cost calculation per sector using either rates database or previous calculations.



CARGO MANAGEMENT

- AWB database with advanced filters.
- Cargo planning on flights/truck trips.
- Automated track and trace.
- Rates database.
- Revenue and costs control.
- AWB stock management.
- AWB and labels printing.
- Full AWB Accounting processing.
- CASS export, e-AWB and messaging support.



CARGO QUOTATION

- Cargo quotations database with advanced filters.
- Advanced rates database.
- Creation of quotes from incoming mails and cargo bookings from quotes.
- Automated message generation to reply customer requests.
- Full correspondence history.



CHARTER CALCULATION

- Filterable quotes/calculation database.
- Connection to flight planning software for precise route data, such as flight time, fuel consumption, navigation charges, based on aircraft type and weather.
- Advanced rates management for all types of costs.
- Instant converting of estimations into commercial offers.



CARGO RESERVATION

- Full Online booking engine with agent stock control.
- Planning cargo on flights.
- Track and trace with automated status updates and integration to website.
- iOS and Android mobile apps support with push notifications.
- Possible integration with 3rd parties apps.



CARGO TRACK & TRACE

- Customization to customer's corporate design.
- AWB details.
- Easy shipments tracking.
- Full information on cargo movements.
- Graphical presentation of routing.
- iOS and Android mobile apps support with push notifications.



ULD CONTROL

- ULD planning on flights.
- Proactive monitoring and real-time system alerts.
- Visibility of your airline's entire ULD inventory.
- Transfer handling.
- Stock check, repair control, condition updates.
- Pallets availability at multiple locations.
- Management reports.



FLIGHT STATUS LIVE UPDATE

- Direct integration to customer's website.
- Customization to customer's corporate design.
- Immediate schedule update.



CRM

- Customers/suppliers/leads management with advanced multiple contacts, types, statuses, extra fields management.
- Activities control and linked tasks history, documents upload.
- Credit terms.
- History of operations, accounting integration, reporting.



INFO & RATES DATABASE

- Aircraft Types: VIP, Commercial, Cargo, Rotary Wings; categories, full data (MTOW, cabin dimensions, facilities, speed), photo gallery, list of aircrafts.
- Airports: longitude, latitude, time zone, runway details, tarmac details, terminals details, procedures, restrictions, permissions.
- Countries: region, sanctions, list of airports.
- Distances: flight distance, entry points, weather codes, notams, flight/block time for reporting.
- Contacts: all companies contacts grouped by contractor or company, extended search.
- Rates: currency rates, customer specific rates, services rates, shipping rates, fuel rates, fixed expenses for airports, flight cost center, etc.
- Other data selector editors: variable pick lists, services, revenue, expense types, etc.



MAIL LINK

- Mailbox import with attachments to Awery ERP.
- Messages database with statuses, labels and advanced filters.
- Messages auto-linking to threads, customers, quotes, tasks, activities, flights, services, AWB's.
- Messages history in customer/supplier profiles.



ACCOUNTING & FINANCE

- All standard accounting and financial functions with advanced reporting.
- GAAP compliant full featured solution for accounting management.
- Custom COA, multi-branch, multi-currency and taxation support.
- Deep integration of finance and operational/sales data.
- Cost and revenue centers allocation.
- Receivables and payables control.
- Bank and cash, credit and debit notes, JVs management.
- Fixed assets and prepayments control.
- Trial Balance, Balance Sheet, Profit and Loss, Cash Flow and other reports.



DOCUMENTS LIBRARY

- A unified database for storing and distributing documents.
- Transparent document flow within the company.
- Covers compliance requirements for documents distribution within the aviation company.
- Bank-grade security with advanced access policies.
- Key formats supported (pdf, word, excel, etc.).
- User-friendly interface.
- Mobile support on any platform.



EMPTY LEGS
CONTROL



HUMAN
RESOURCES

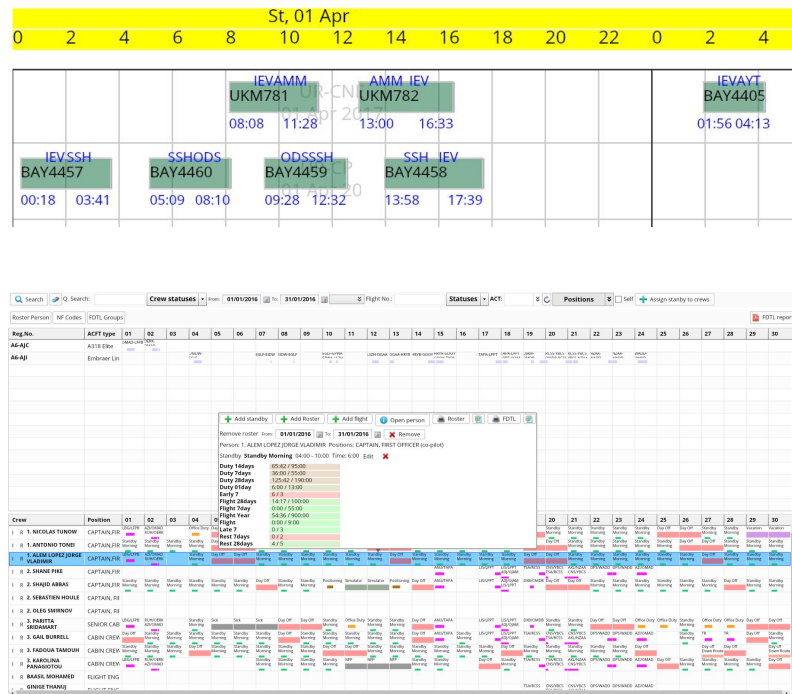


AWERY ERF
MOBILE



COMPLIANCE
& AUDITS

AWERY



VIEW (2)

AWERY

No	Name		Positions	Nationality	Residence	Cert. ...	B.Cou...	B.Ap	Actyp...	FD...	D1	D2	D3	D4	D5	D6	T1	T2	T3	T4	Self
25	Ziatdinov Dmytro	B	Purser, Flight Attendant, Attendant Instructor TRI, LI(FA)	Ukraine		UA			B737-501	431:5	8	8	654	2008	3081	-	28	28	29	148	✓
26	Grubskiy Dmytro	B	Flight Attendant, Attendant-Trainee	Ukraine		UA			B737-501	273:5	352	364	552	2644	-	-	17	17	28	29	
27	Rogatyn Dmytro	B	Flight Attendant, Attendant-Trainee	Ukraine		UA			B737-501	415:1	49	49	187	2522	2559	-	14	76	121	128	
28	Tkachenko Dmytro	B	Flight Attendant, Attendant-Trainee	Ukraine		UA			B737-501	7:45	630	630	2084	2603	3731	-	105	323	323	357	
29	Kompanets Dmytro	B	Flight Attendant, Attendant-Trainee	Ukraine		UA			B737-501	494:2	337	352	352	3047	3575	-	12	16	323	323	

Flight Certification Check up MD

AWERY AVIATION SOFTWARE

TIMETABLE 13 JAN 2015 - 16:36:13Z

HISTORY PLANNING IATA ICAO

DATE	TIME	
13 Jan	00 06 14 16:36 23	UKBB - OMS
14 Jan		
15 Jan		Day off
16 Jan		Standby "Morning"
17 Jan		
18 Jan		Standby
19 Jan		Standby
20 Jan		Day off
21 Jan		Standby
22 Jan		Standby
23 Jan		Day off
24 Jan		Day off
25 Jan		
26 Jan		Standby "Morning"
27 Jan		
28 Jan		Standby "Morning"
29 Jan		
30 Jan		LFPG -
31 Jan		
01 Feb		

New flight Wizard + Open new creation page

Flight type: Charter Purpose: Status: Request Planned Confirmed No follow D1: 364 D2: D3: Payload unit: kg MTOW: 0 kg

Customer: All companies Reg. No: A6-ACM ACFT type: Gulfstre Bulk Reg. No: Bulk ACFT type:

Office: A Company Making Every Operator: ACME Airlines, United Araf Client Reference: Request Date (zulu): 27/04/2017 00:00 Speed: 850 km/h 459 kt Map

Sector 1

Origin: Dubai (OMDB, DXB) Dubai Internation Alerts (0) Departure date: 27/04/2017 00:00 04:00 Destination: Istanbul (LTBA, IST) Ataturk, Turkey Alerts (0) Flight time: 4:00 Arrival date: 27/04/2017 04:30 07:30 Ground time: 0 d 02:00

Flight No: Purpose: Flight Status: Planned

Payload: kg Offload: kg Cargo type: Number of PAX: Crew Count: Empty Leg

PAX(EL): Cargo(EL): Available Payload: 0 kg Available CBM: 6.3

Sector 2

Origin: Istanbul (LTBA, IST) Ataturk, Turkey Alerts (0) Departure date: 27/04/2017 06:30 09:30 Destination: Frankfurt (EDDF, FRA) Frankfurt Main Alerts (0) Flight time: 2:40 Arrival date: 27/04/2017 09:30 11:30 Ground time: 1 d 02:00

Flight No: ACM101 Purpose: Flight Status: Planned

Payload: kg Offload: kg Cargo type: Number of PAX: Crew Count: Empty Leg

PAX(EL): Cargo(EL): Available Payload: 0 kg Available CBM: 6.3

Sector 3

Origin: Frankfurt (EDDF, FRA) Frankfurt Main Alerts (0) Departure date: 28/04/2017 11:30 13:30 Destination: Paris (LFPG, CDG) Charles De Gaulle, F Alerts (0) Flight time: 1:00 Arrival date: 28/04/2017 12:35 14:35 Ground time: 0 d 02:00

Flight No: ACM101 Purpose: Flight Status: Planned

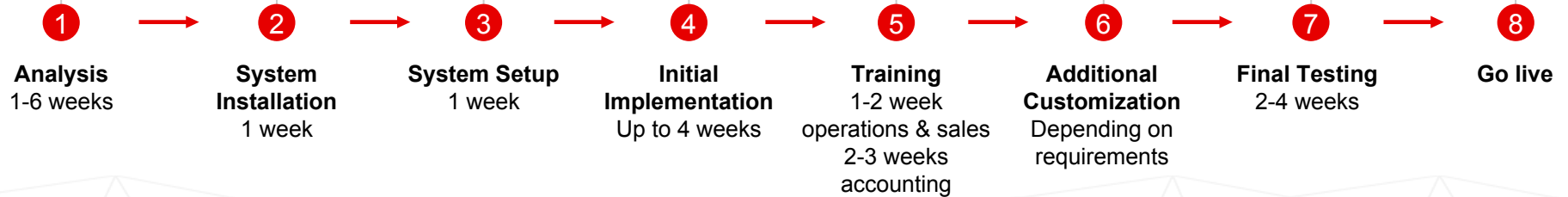
Payload: kg Offload: kg Cargo type: Number of PAX: Crew Count: Empty Leg

PAX(EL): Cargo(EL): Available Payload: 0 kg Available CBM: 6.3

Path	Planned Dep.	Actual Dep.	Planned Arrival	Actual Arrival	Note
Kiev (IEV) - Amman (AMM)	22 Apr, 2017 11:15	—	22 Apr, 2017 15:00	—	
Amman (AMM) - Kiev (IEV)	22 Apr, 2017 16:00	—	22 Apr, 2017 19:40	—	
Kiev (IEV) - Beirut (BEY)	25 Apr, 2017 12:50	25 Apr, 2017 13:14	25 Apr, 2017 16:00	25 Apr, 2017 16:00	
Beirut (BEY) - Kiev (IEV)	25 Apr, 2017 17:30	25 Apr, 2017 18:51	25 Apr, 2017 20:50	25 Apr, 2017 21:43	

SCOPE & TIMELINE

AWERY



We provide full support to your team 24/7 after the system go live

Awery provides software solutions to the aviation businesses globally. Our detailed client portfolio is here — <https://awery.pro/customers>. Commercial Airlines we are currently working with:



BRAVO AIRWAYS

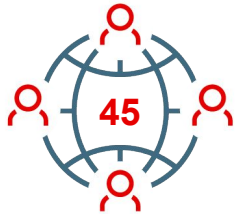


АВІАКОМПАНІЯ „БУКОВИНА“
„BUKOVYNA AIRLINES“





Awery is a software development company and IT service provider established in **2009**.



Awery products have been developed in close cooperation with aviation and logistic companies to reflect up-to-date market demands and to offer tailored complete business cycle solutions with unlimited expansion capabilities.



Awery team delivers full product support to the customers at every stage. Our goal is to help you save time and efforts, improve business performance, increase operational efficiency and boost profitability.

22 qualified professionals — 12 developers, 6 support & admin, 2 sales & biz dev and management team:



Vitaly Smilianets, Founder and CEO

13 years of professional experience in global aviation software projects; expert in IT solutions, WEB, Rich Internet Applications, ERP Systems, Mobile Platforms and Software Development.



Sergey Khavilo, Business Development Manager

16 years of sales and business development experience on IT market; more than 11 years of work in multinational companies (Intel, AMD)



Andreas Almazov, Business Development, MENA Region

17 years in ERP software Development and Implementation projects. 10 years in Business Management in Aerospace industry (Flights management, Air Cargo Division Management etc.)



Vitaly Smilianets
Founder and CEO

E-mail: vitaly@awery.aero

Tel: +380 50 469 29 49

Web: www.awery.aero

